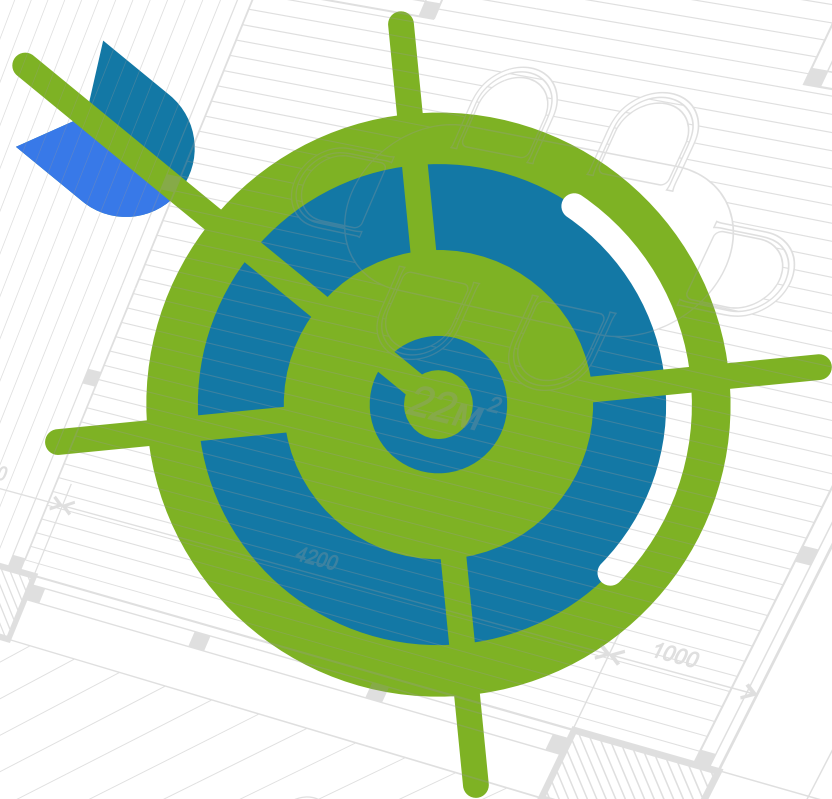


POINT CLOUD TO BIM FOR EDUCATIONAL CENTRE



CHALLENGES

- ✓ Heavy Input Data files
- ✓ Distorted & Missing Scanned Data
- ✓ Prolonged Modeling time due to Missing Data



PROJECT DURATION

26 DAYS						
4	5	6	7	1	2	3
11	12	13	14	8	9	10
18	19	20	21	15	16	17
25	26	27	28	22	23	24
				29	30	31

PROJECT LOCATION



INPUT FILES



EXECUTION

- ✓ Study of Input Point Cloud Data
- ✓ Imported .PCG files in Revit to setup models with 10 MM Accuracy
- ✓ Preparation of final Architectural & Structural BIM Models
- ✓ Accuracy in Models helped the Client to save Time



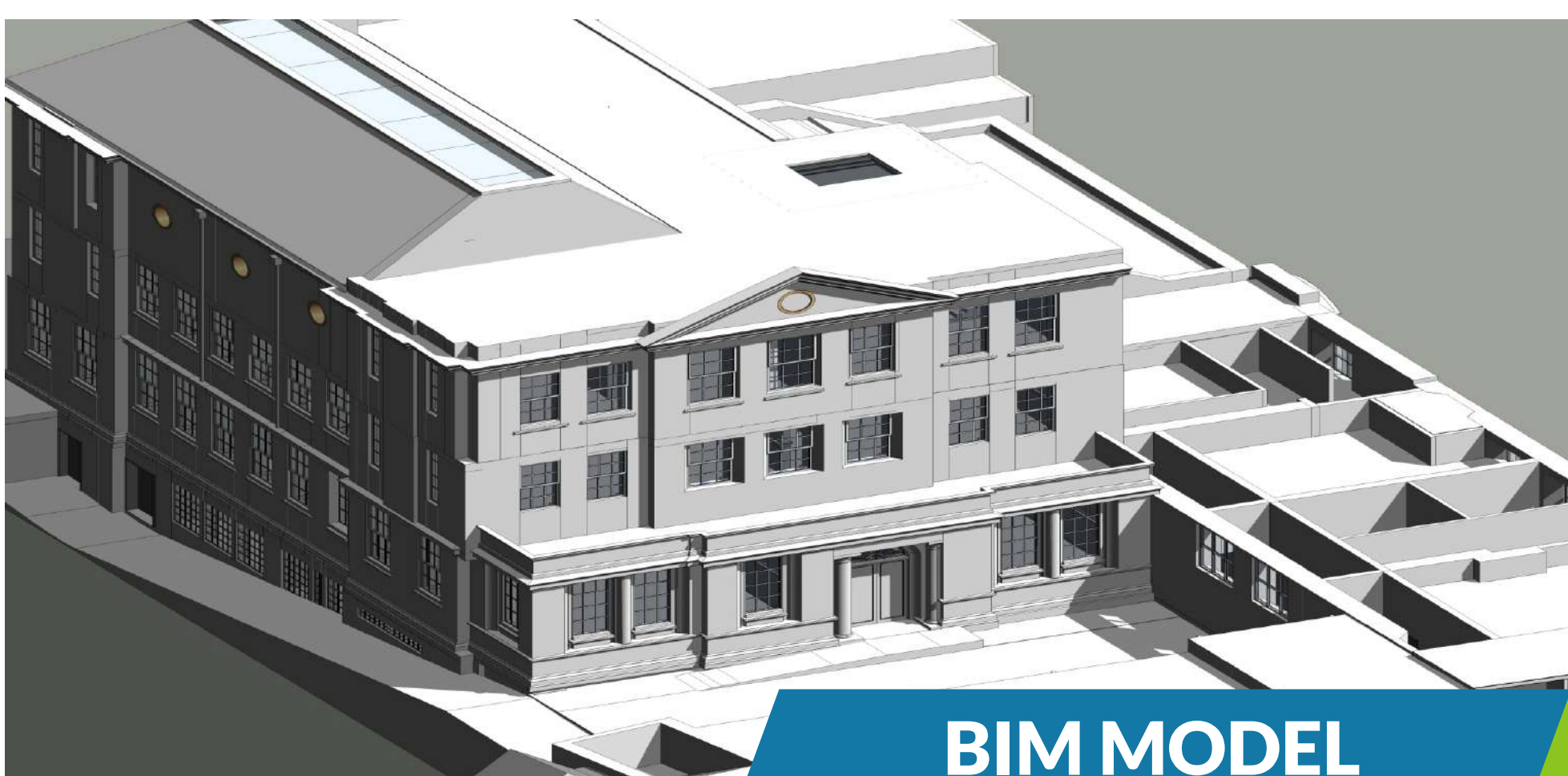
SOFTWARES USED



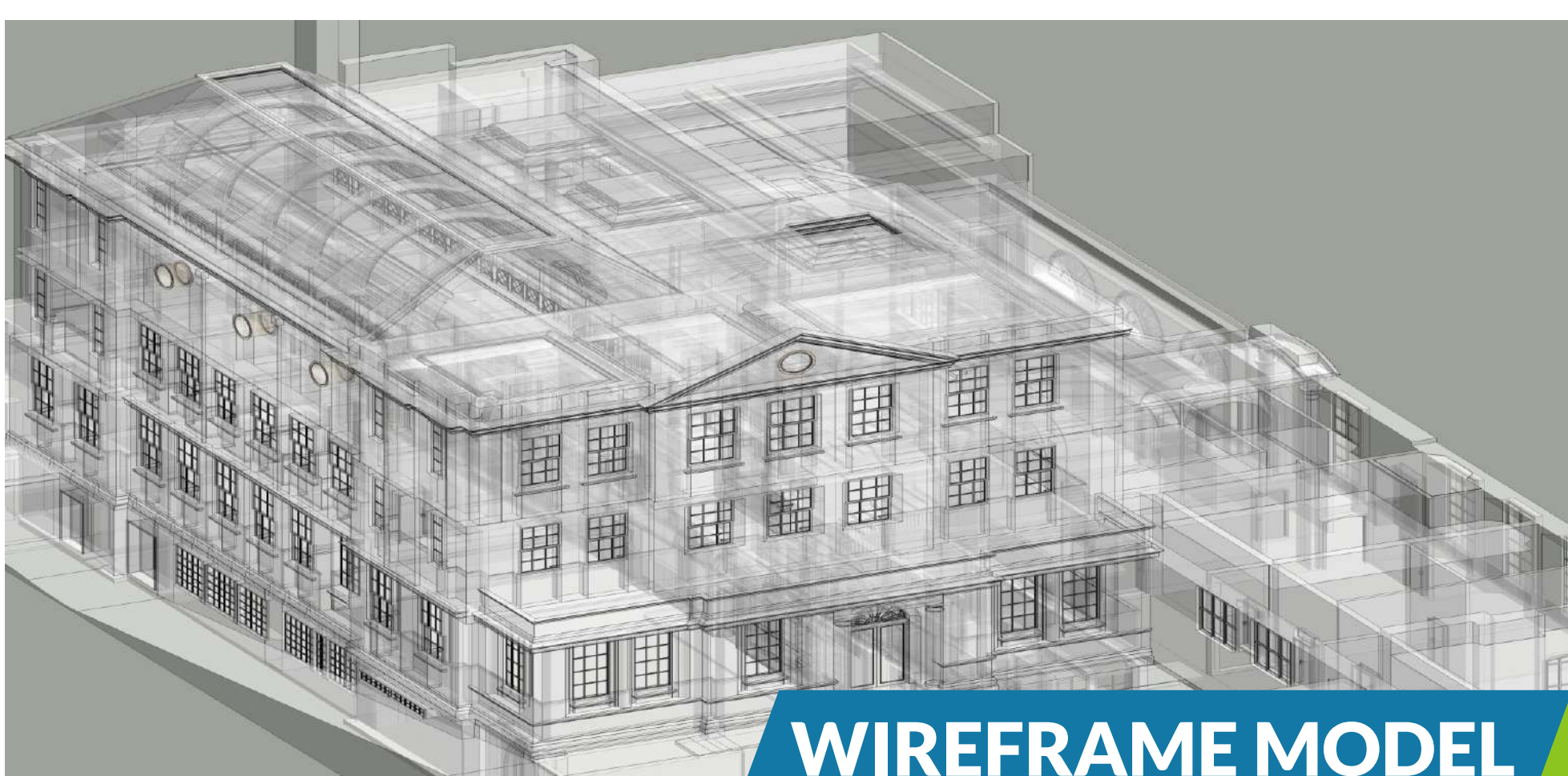
OUTPUTS



3D SCANNED IMAGE



BIM MODEL



WIREFRAME MODEL